


**NIGERIA – JULY 2020**


**Status of Cardiovascular Disease (CVD) and Non-communicable diseases (NCD)**

**Country Demographics**


**World Bank Classification**  
**Lower-middle income**




**50%**  
of population living in rural areas  
60% (Sub-Sahara Africa)




**0.11%**  
of total mortality caused by **RHD**  
Global data: 0.51%



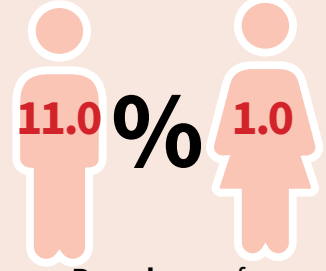
**0.75%**  
Prevalence of **rheumatic heart disease (RHD)**  
Global data: 0.53%




**2%**  
of premature CVD mortality attributable to **tobacco**  
Global data: 10%



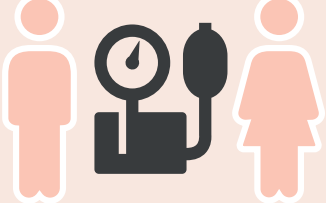
**11.0%** MALE **1.0%** FEMALE  
Prevalence of **tobacco use age ≥15**  
Global data: 36.1% (male) 6.8% (female)



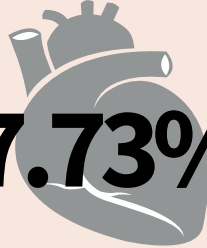
**0.36%**  
of deaths caused by **hypertensive heart disease**  
Global data: 1.65%




**22.7%** MALE **25%** FEMALE  
of population with raised **blood pressure** (SBP ≥140 or DBP ≥90)  
Global data: 24.1% (male) 20.1% (female)



**7.73%**  
of **deaths** caused by CVD  
Global data: 31.8%



**16.8%**  
of population with raised total **cholesterol** (≥5.0 mmol/L)  
Global data: 38.9%



**8.9%**  
Prevalence of obese adults (BMI of ≥30 kg/m<sup>2</sup>)  
Global data: 13.1%



**3.1%**  
Prevalence of diabetes (ages 20-79)  
3.9% (Africa)

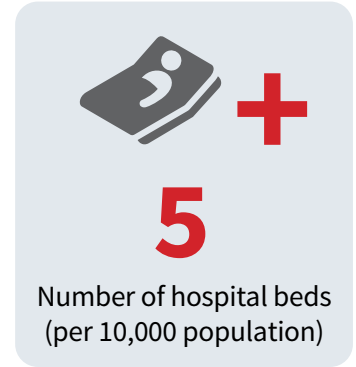
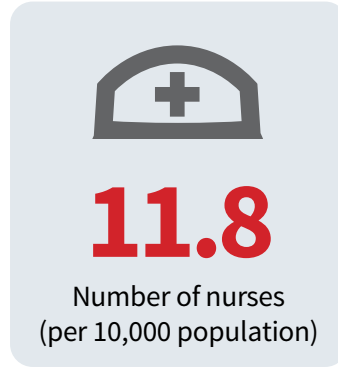
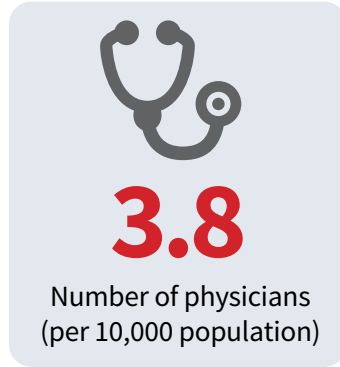


**NIGERIA**



**NIGERIA**

**Health System Capacity**



**KEY:** No data Not in place In process/ partially implemented In place

**Clinical Practice and Guidelines**

Locally-relevant (national or subnational level):

Clinical tool to assess CVD risk .....

Guidelines for treatment of tobacco dependence .....

**Clinical Guidelines for:**

The detection and management of atrial fibrillation .....

The detection and management of acute rheumatic fever .....

The detection and management of rheumatic heart disease .....

The detection and management of diabetes .....

CVD prevention (within the last 5 years) .....

A system to measure the quality of care provided to people who have suffered acute cardiac events .....

NIGERIA

**Cardiovascular Disease Governance**

**A national strategy or plan that addresses:**

CVDs and their specific risk factors .....

NCD and their risk factors .....

Rheumatic heart disease prevention and control as a priority .....

A national surveillance system that includes CVDs and their risk factors .....

**Stakeholder action**

Non-governmental organizations' advocacy for CVD policies and programmes .....

Civil society involved in developing and implementing of national CVD prevention and control plan .....

**For more information, please email** [info@worldheart.org](mailto:info@worldheart.org) [info@pascar.org](mailto:info@pascar.org) [secretary@nigeriancardiacsociety.org](mailto:secretary@nigeriancardiacsociety.org)