

USE TO FLU

IT'S TIME TO INSIST THE ANNUAL FLU SHOT BE PART OF THE **FIGHT** AGAINST **HEART DISEASE**

INFLUENZA IS COMMONLY CALLED THE FLU



INFLUENZA INCREASES THE RISK OF HEART ATTACK BY MORE THAN

10X

In the first 7 days after contracting the flu¹



ALL AGE GROUPS CAN BE AFFECTED BY THE FLU

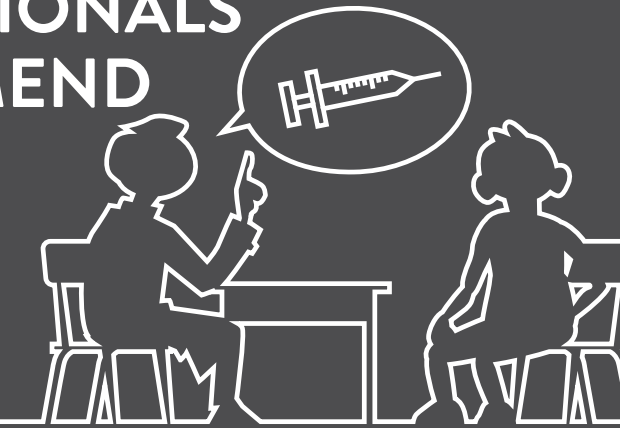
But some groups are more at risk than others



VACCINATION CAN REDUCE THE RISK OF HEART ATTACKS DUE TO FLU BY AS MUCH AS

45%²

PEOPLE ARE **14X** MORE LIKELY TO GET VACCINATED IF HEALTH PROFESSIONALS RECOMMEND IT³



THE ELDERLY, PEOPLE WITH UNDERLYING HEALTH CONDITIONS SUCH AS HEART DISEASE, CHILDREN UNDER 5 YEARS OLD, AND PREGNANT WOMEN



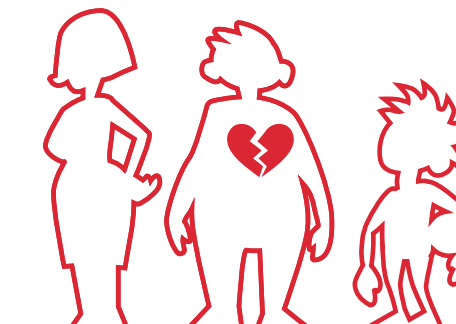
HEALTHCARE DIRECT COSTS INCREASE BY UP TO **2X** FOR PATIENTS WITH AT LEAST ONE COMPLICATION

compared to those without complication.⁴



CARDIOVASCULAR DISEASE DISPROPORTIONATELY AFFECTS DISADVANTAGED GROUPS⁵

It is even more important to consider preventive action.



ARE AT GREATER RISK OF SEVERE DISEASE OR COMPLICATIONS WHEN INFECTED⁶

